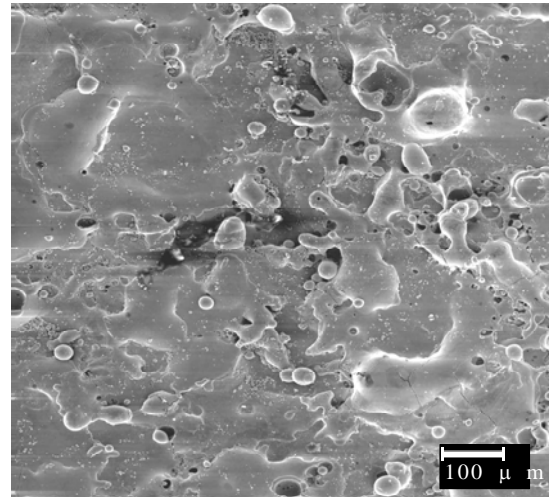
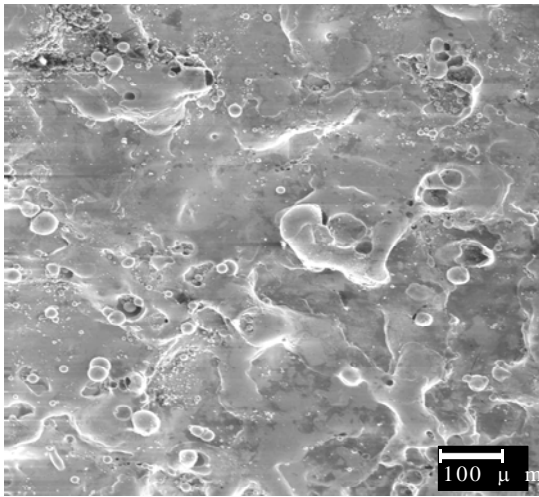


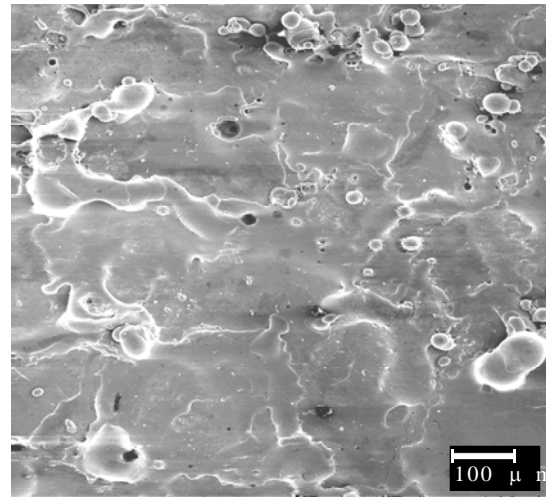
(a) Óleo A



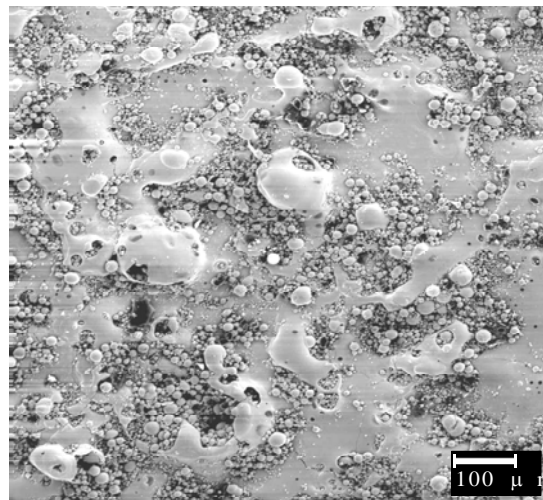
(b) Óleo B



(c) Óleo C

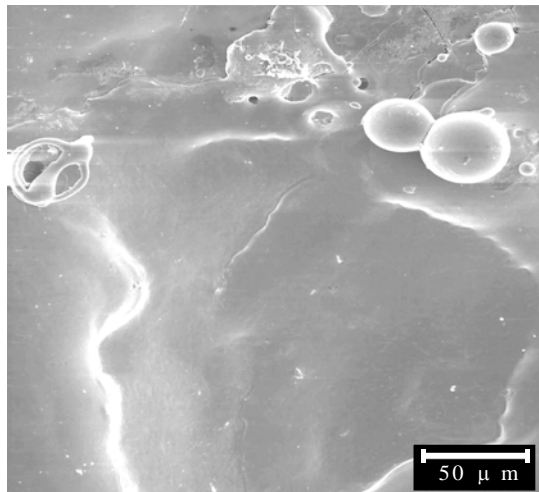


(d) Óleo D

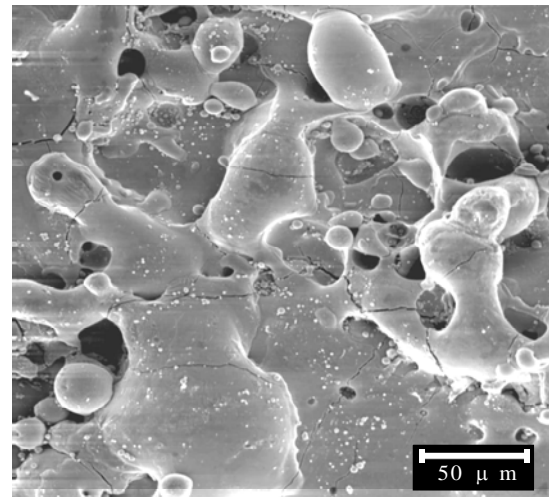


(e) Querosene

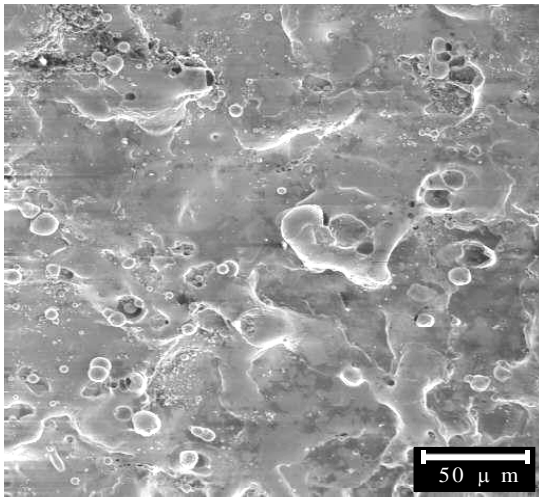
**Figura 5.13 – Topografias obtidas por MEV (aumento de 100x) das superfícies usinadas por EDM com fluidos dielétricos A, B, C, D e E em regime de Desbaste Médio.**



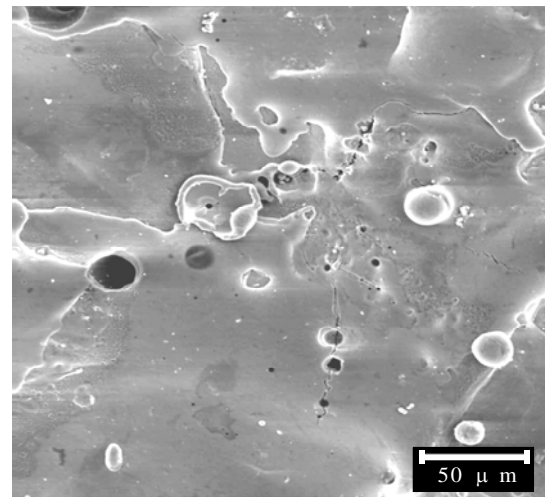
(a) Óleo A



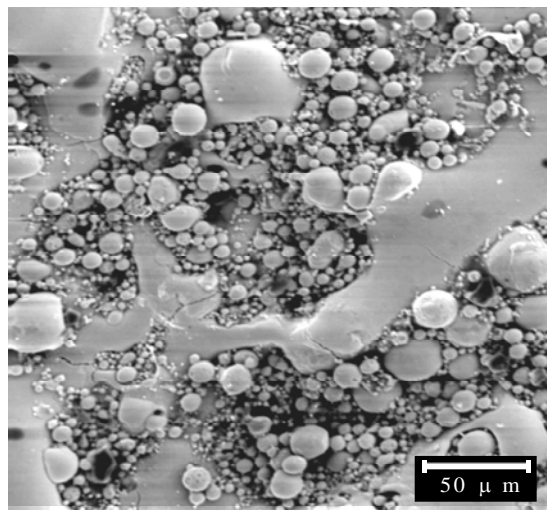
(b) Óleo B



(c) Óleo C



(d) Óleo D



(e) Querosene

**Figura 5.14 – Topografias obtidas por MEV (aumento de 300x) das superfícies usinadas por EDM com fluidos dielétricos A, B, C, D e E em regime de Desbaste Médio.**